

<b>Horticulture</b> .....	2
HS <sup>2</sup> Weather Protection .....	2
Shading screens .....	6
Shading & Energy saving .....	8
Films .....	11
Blackout .....	12
System parts .....	14
Drives and Racks .....	14
Wires & Cables .....	21
Rolling screen systems .....	27
Technical parts .....	29
Tubes and Profiles .....	40
Other accessories .....	45
Horticulture Supplies .....	47
LED lighting .....	47
Deko & Events .....	48

# HORTICULTURE

## HS<sup>2</sup> WEATHER PROTECTION

Retractable Roof Systems



### HS<sup>2</sup>-DIABOLO WHEEL SET (3495)

SKU:3495

Diabolowheel SET for truss-covering profile

made of:

- Aluminium bracket 80x40x3mm x 90mm
- Hammerhead bolt M6x16 / stainless steel
- Diabolo wheel, small, M6 for Ø32mm tube
- Screw M6x75mm (Aussensechskant) / stainless steel
- Nut M6 stainless steel



### APS DUO HD PROFILE (3625)

SKU:3625

in aluminium  
6.4m long



### HEXAGONAL DRILLING SCREW (8625/ 8630)

SKU:8625/ 8630

#### Variations

##### Type

with flange 4,2x 25mm for HS<sup>2</sup>-support bracket (Art. 3686)

with flange 6,3x 19mm



### HS<sup>2</sup> TRUSS COVERING PROFILE (3717)

SKU:3717

in Aluminium  
Length: 6.40m  
Width: 80mm



### COUPLING PIECE FOR SCREEN PROFILE (3689/ 3690)

SKU:3689/ 3690



### HS<sup>2</sup> MULTICLIP OUTDOOR SET (3688)

SKU:3688

consisting of:  
- HS<sup>2</sup>-Multiclip bracket single

---

## Variations

Type
------

in AL, straight
-----------------

in AL, bent
-------------



### HS² MULTICLIP SET INDOOR (3688-IN)

SKU:3688-IN

consisting of:

- HS²-Multiclip bracket single
- Plastic insert



### HS² SUPPORT BRACKET FOR TRUSS (3686)

SKU:3686

in plastic, single piece, without self-drilling screw (art. 8630)



### INSERT FOR HS² MULTICLIP SET INDOOR (3679)

SKU:3679

in plastic



### HS² DRIPDRAIN PROFILE (3627)

SKU:3627

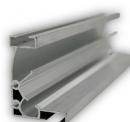
Aluminium/ 6.4m



### KEDERPLUS PROFILE (3639)

SKU:3639

Aluminium/ 6.40m



### APS2 SCREEN PROFILE (3636)

SKU:3636

Aluminium/ 6.4m



### SCREEN PROFILE APS QUATTRO (3620/ 3620-2)

SKU:3620/ 3620-2

Length: 6.4m



### APS DUO SUPPORT PROFILE (3624)

SKU:3624

in aluminium  
6.4m long

---

## Variations

Type
------

in aluminium
--------------

in plastic
------------



## COVERING PLATE FOR HS² MULTICLIP (3604)

SKU:3604

in Aluminium (fits to plastics support)



## HS²-ANGLE (3475)

SKU:3475

for wire fixation  
50x50x5mm, galvanised



## HS MAXILUX 200 ANTIFIRE (2627)

SKU:2627

Highly transparent film for architectural application  
Material: 100% ETFE (Ethylene tetrafluoroethylene)  
Flame retardancy: in conformity with DIN4201-B1 / DIN EN 13 501-1 (Bs1d0)  
Thickness: 0.20mm  
Weight: ca.360 g/m²  
Standard width: 2.0m



## HS² ISOLATING RUBBER (3570)

SKU:3570

für profile joints (art. 3624-3625)



## HSX ANTIFIRE SERIES (2613/ 2618)

SKU:2613/ 2618

Film for weather protection (HS² installation), side or roof roll up  
Material: base 100% polyester/ coating PVC  
Flame retardancy: in conformity with DIN EN 13501-1 (Bs2,d0)  
Standard width: 3.0m

### Variations

#### Type

HSX 650 ANTIFIRE A+B

HSX 700 ANTIFIRE WHITE



## SHS WOVEN WHITE SERIES (1399 / 1386)

SKU:1399 / 1386

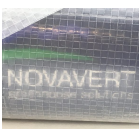
PE film woven strips  
Double-sided waterproof coated  
Standard width: 3,66m

### Variations

#### Typ

SHS Woven White HD B3

SHS Woven White 180 ANTIFIRE



## SHS WOVEN CLEAR SERIES (N/A)

SKU:N/A

PE film strips  
Double-sided waterproof coated  
Standard width: 3,66m



## WIRE TENSIONER WITH FLAT FRONT EDGE (4981/ 4984)

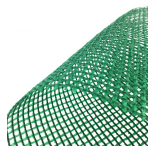
SKU:4981/ 4984

### Variations

## Variations

Type	Type
SHS Woven Clear HD	1.8-3.0mm / max 400 kg
SHS Woven Clear 400	3.0-4.2mm / max 600kg
SHS Woven Clear 180 ANTIFIRE	

# SHADING SCREENS

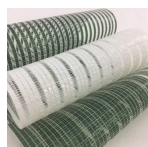


## SHADING MAT, DIFFERENT TYPES AVAILABLE (N/A)

SKU:N/A

### Variations

Type
50% Shading
70% Shading



## IHS OPEN ANTIFIRE SERIES (1766/ 1868/ 1754)

SKU:1766/ 1868/ 1754

Polyester filament yarn/ HDPE-Film strips (different colours available)  
Fire retardant in compliance with DIN4102-B1  
Standard width: 4.30/ 4.75m

### Variations

Type
IHS 107 OPEN ANTIFIRE (3x white/ 1x open)
IHS 167 OPEN ANTIFIRE (3x green/ 1x open)
IHS 105 OPEN ANTIFIRE (1x green/ 1x open)



## WHS PRO OPEN SERIES (N/A)

SKU:N/A

Polyester filament yarn/ HDPE-strips



## OHS ANTIFIRE SERIES (N/A)

SKU:N/A

OHS Nets of HDPE film strips (in several colours)

### Variations

Type
OHS 116 ANTIFIRE (white)
OHS 136 ANTIFIRE (green)
OHS 156 ANTIFIRE (grey)
OHS 176 ANTIFIRE (black)



## IHS 107 OPEN ANTIFIRE (1766)

SKU:1766

Polyester filament yarn/ HDPE-strips (white-open)  
flame retardant according to DIN4102-B1  
Standard width: 4.75m  
Weight: ca. 200g/m<sup>2</sup>  
Shading: ca. 53-55%



## WHS 117 PRO OPEN ANTIFIRE (1202)

SKU:1202

Polyester filament yarn/ HDPE strips

(white-open) flame retardant according to DIN4102-B1

---

## Variations

### Type

WHS 115 PRO OPEN ANTIFIRE (white-open 1:1)

WHS 117 PRO OPEN ANTIFIRE (white-open 3:1)

WHS 113 PRO OPEN ANTIFIRE (white-transparent-open)



## GHS 117 OPEN PRO ANTIFIRE (N/A)

SKU:N/A

Knitted Polyester yarn/ HDPE film (grey)  
Flame retardant

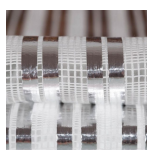
---

## Variations

### Type

GHS 115 OPEN PRO ANTIFIRE (grey-transparent 1:1)

GHS 117 OPEN PRO ANTIFIRE (grey-transparent 3:1)



## HS 895 OPEN B3 (9895)

SKU:9895

Acrylic knitted fabrics with AL-PET-bond  
non-flame retardant  
Standard width: 4.30m  
Weight: 120g/m<sup>2</sup>  
Shading value: ca. 50%  
Energy saving: ca. 30%

---

(white-open)  
Fire retardant according to DIN4102-B1  
monitored product  
Standard width: 4.75m  
Weight: 90g/m<sup>2</sup>  
Shading: ca. 55%

---



## SHS OUTDOOR 60 B3 (1660)

SKU:1660

PE / Aluminium compound foil (white-silver grey)  
Non flame retardant  
Standard width: 4.30m  
Weight: 135g/m<sup>2</sup>  
Shading: ca. 65%  
Energy saving: ca. 17-20%

---

# SHADING & ENERGY SAVING



## SHS 160 B3 (1776)

SKU:1776

Knitted material in PES und AL stripes,  
PET-yarn  
Non flame retardant  
Standard width: 4.30m  
Weight: ca. 90g/m<sup>2</sup>  
Shading: ca. 60-63%  
Energy saving: ca. 55%



## SHS 150 B3 (1775)

SKU:1775

Knitted material in PES and AL-stripes,  
PET yarn  
Non-flame retardant  
Standard width: 4.30m  
Weight: ca. 76g/m<sup>2</sup>  
Shading: ca. 50-52%  
Energy saving: ca. 50-55%



## HS TREVIRA CS ANTIFIRE SERIES (1110/ 1124/ 1125)

SKU:1110/ 1124/ 1125

Woven screen made of 100% PES  
Fire retardant  
Standard width: 3.50m for white /  
2,15m for colour  
Weight: ca. 150g/m<sup>2</sup>  
Shading level: white ca. 52% / in colour  
ca. 65%  
Energy saving: ca. 50-55%



## HS MODACRYLICS SERIES (1150 / 1151)

SKU:1150 / 1151

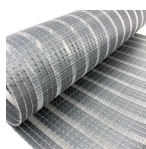
Woven screen of modified acrylics  
(modacrylics)  
Fire retardant  
Standard width: 3.50m / 4.30m  
Weight: ca. 148g/m<sup>2</sup>  
Shading level: white ca. 55% / in colour  
ca. 65%  
Energy saving: ca. 50-55%

### Variations

Type
white
FLEXA, terracotta-white, thin stripes
FLEXA, terracotta-white, wide stripes

### Variations

Type
white
grey-white 2:2



## GHS 117 PRO ANTIFIRE (1249)

SKU:1249

Knitted Polyester yarn/ HDPE film  
(silver-grey)  
Flame retardant  
Standard width: 4.30m  
Weight: 110g/m<sup>2</sup>  
Shading value: ca. 70%



## HS TREVIRA ANTIFIRE (1110/ 1124/ 1125)

SKU:1110/ 1124/ 1125

Woven screen 100% Polyester  
Standard width: white 3.50m / in colour  
2.15m  
Weight: ca. 150g/m<sup>2</sup>  
Shading: white ca. 52% / in colour ca.  
65%  
Energy saving: ca. 50-55%





## WHS PRO ANTIFIRE SERIES (1218/ 1205)

SKU:1218/ 1205

Polyester filament yarn/ HDPE-stripes (white-transparent)  
flame retardant according to DIN4102-B1

### Variations

#### Type

WHS 117 PRO ANTIFIRE (white-transparent 3:1)

WHS 113 PRO ANTIFIRE (transparent-white 3:1)



## HS 88X B3 SERIES (N/A)

SKU:N/A

Material: Acrylics with Aluminium stripes thermally applied on it  
Flame retardancy: none  
Standard width: 3.50m/ 4.30m

### Variations

#### Type

HS 880 B3 (white/ 1 AL-stripe)

HS 885 B3 (white/ 2 AL-stripes)

HS 887 B3 (white/ 3 AL-stripes)



## SHS WHITE THERM ANTIFIRE (1251)

SKU:1251

Material: HDPE / Modacrylics with woven reinforcement strips every 20cm



## SHS 15 PRO ANTIFIRE (1717)

SKU:1717

Trasparent energy saving screen in HDPE-stripes und Polyester filament yarn  
Flame retardant in conformity with DIN 4102-B1  
Standard width: 4.30m  
Weight: 100g/m<sup>2</sup>  
Shading: ca. 15%  
Achievable energy saving: ca. 46%



## SHS CLEAR THERM ANTIFIRE (1256)

SKU:1256

Material: HDPE / Modacrylics with woven reinforcement strips every 20cm  
Double layer screen: transparent film (upper und bottom layer)  
Fire retardant: in conformity with DIN 4102-B1  
Standard width: 4,30m  
Weight: 150g/m<sup>2</sup>  
Shading: ca. 36%  
Energy saving: ca. 65-70%



## SHS SHADE THERM ANTIFIRE (1255)

SKU:1255

Material: HDPE / Modacrylics with woven reinforcement strips every 20cm

### Variations

#### Type

white, standard width: 3,55m

FLEXA thin stripes (terracotta-white) / standard width: 2,15m

FLEXA large stripes (terracotta-white) / standard width: 2.15m

Double layer screen: Upper layer white film / Bottom layer transparent film  
 Fire retardant: in conformity with NTA 8825:2018 (B-s2, d0)  
 Standard width: 4,30m  
 Weight: 170g/m<sup>2</sup>  
 Shading: ca. 65%  
 Energy saving: ca. 70%

---

Double layer screen: Upper layer gray film / Bottom layer transparent film  
 Fire retardant: in conformity with DIN EN 13501-1 (B-s1, d0)  
 Standard width: 4,30m  
 Weight: 170g/m<sup>2</sup>  
 Shading: ca. 65%  
 Achievable energy saving: ca. 70%

---



## **IHS ANTIFIRE SERIES (1767/ 1751/ 1851/ 1866)**

SKU:1767/ 1751/ 1851/ 1866

Polyesterfilament yarn/ HDPE film strips  
 (different colours)  
 Fire retardant in compliance with  
 DIN4102-B1 (monitored product)  
 Standard width: 4.75m  
 Weighth: ca. 200g/m<sup>2</sup>

---

## **Variations**

### **Type**

IHS 108 ANTIFIRE grey-black-grey-transparent

IHS 100 ANTIFIRE white

IHS 150 ANTIFIRE (IT) white-green-white-red

IHS 165 ANTIFIRE green-white-green-white

# FILMS



## HSX ANTIFIRE SERIES (2613/ 2618)

SKU:2613/ 2618

Film for weather protection (HS<sup>2</sup> installation), side or roof roll up  
Material: base 100% polyester/ coating PVC  
Flame retardancy: in conformity with DIN EN 13501-1 (Bs2,d0)  
Standard width: 3.0m

### Variations

#### Type

HSX 650 ANTIFIRE A+B

HSX 700 ANTIFIRE WHITE



## SHS WOVEN WHITE SERIES (1399 / 1386)

SKU:1399 / 1386

PE film woven strips  
Double-sided waterproof coated  
Standard width: 3,66m

### Variations

#### Typ

SHS Woven White HD B3

SHS Woven White 180 ANTIFIRE



## HS MAXILUX 200 ANTIFIRE (2627)

SKU:2627

Highly transparent film for architectural application  
Material: 100% ETFE (Ethylene tetrafluoroethylene)  
Flame retardancy: in conformity with DIN4201-B1 / DIN EN 13 501-1 (Bs1d0)  
Thickness: 0.20mm  
Weight: ca.360 g/m<sup>2</sup>  
Standard width: 2.0m



## SHS WOVEN CLEAR SERIES (N/A)

SKU:N/A

PE film strips  
Double-sided waterproof coated  
Standard width: 3,66m

### Variations

#### Type

SHS Woven Clear HD

SHS Woven Clear 400

SHS Woven Clear 180 ANTIFIRE

# BLACKOUT



## BHS 100 ANTIFIRE (1220)

SKU:1220

Material: Woven HDPE, black  
 Fire retardant  
 Weight: ca. 80g/m<sup>2</sup>  
 Darkening level: ca. 95%  
 Standard width: 4,75m  
 for higher darkness it is recommended  
 a double-layer installation



## BHS 1 ANTIFIRE (1790)

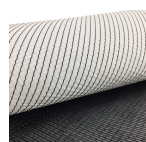
SKU:1790



## HS 1000 SERIES (N/A)

SKU:N/A

Knitted darkening screen for horizontal,  
 HS<sup>2</sup> installation and side or roof roll up  
 Material: 100% polyester, black  
 Standard width: 2.08m  
 Darkening level: ca. 100%



## BHS99 B/W ANTIFIRE (1229)

SKU:1229

Horizontal darkening screen (top black -  
 bottom white)  
 100% HDPE  
 Standard width: 4.70m  
 Flame retardant: in conformity with NTA  
 8825 (Class 1)  
 Weight: 103g/m<sup>2</sup>  
 Darkening: ca. 98-99% (a double layer  
 installation is recommended)  
 Achievable energy saving: ca. 52%

### Variations

#### Type

HS 1000 B3

HS 1000 ANTIFIRE - Flame retardant: in  
 conformity with DIN EN 13501-1 (Bs2,d0)



## HSX ANTIFIRE SERIES (2613/ 2618)

SKU:2613/ 2618

Film for weather protection (HS<sup>2</sup>  
 installation), side or roof roll up  
 Material: base 100% polyester/ coating  
 PVC  
 Flame retardancy: in conformity with  
 DIN EN 13501-1 (Bs2,d0)  
 Standard width: 3.0m

### Variations

#### Type

HSX 650 ANTIFIRE A+B

**Type**

HSX 700 ANTIFIRE WHITE

# SYSTEM PARTS

## DRIVES AND RACKS



### THG VENTILATION RACK, BENT (7501)

SKU:7501

#### Variations

Type



### GREASE FOR RACKS (7991)

SKU:7991

Bucket of 5Kg



### SUPPORT PLATE 1", STRAIGHT (7920)

SKU:7920

#### Variations

Type

90mm long, complete

100mm long, complete



### SUPPORT PLATE 1", ANGLED (7910)

SKU:7910

#### Variations

7910

H 125mm complete

H 135mm complete

H 70mm complete

H 90mm complete



### THG VENTILATION RACK (7500-165)

SKU:7500-165

straight, without fixing angle

#### Variations

7500

1,25m

1,45m



### SET THG FIXING ANGLE (7516/ 7517)

SKU:7516/ 7517

It includes a THG screw M6

7500

1,65m

2.15m



### THG30 PINION HOUSE UNIT (7518)

SKU:7518

for ventilation steel racks



### THG SCREW M6 (7517)

SKU:7517



### THG VENTILATION RACK, STRAIGHT (7500)

SKU:7500

without fixing angle



### THG30 RACK (7230/ 7240)

SKU:7230/ 7240

#### Variations

Type

1,05m

1,25m

1,45m

1,65m

#### Variations

TYP

THG 30, L 4467mm / H 30mm hoch

THG 40, 40mm hoch



### THG40 RACK (7240)

SKU:7240



### WELDING JOINT 1-5/4" (7210)

SKU:7210

#### Variations

7240

Any 7240

Any 7240

Any 7240

Any 7240

Any 7240

Any 7240

#### Variations

Type

Welding joint 1-5/4"

LOCK welding joint 1-5/4"



### SHAFT CLIP (7203)

SKU:7203



### THG30/40 1:1 HOUSING (7205)

SKU:7205

rectangular



### WELDING JOINT 1" (7209)

SKU:7209

#### Variations

7209

Welding joint 1"

LOCK Welding joint 1"



### BKT DRIVE UNIT (7128)

SKU:7128

1" without pinion



### PINION 1" (7129)

SKU:7129

for BGT und BKT



### BGT+BKT BOLT AND NUT (7146)

SKU:7146

for fixing angle art. 7126



### THG40 RACK HOUSING UNIT (7200)

SKU:7200



### LOCK SZG RACK HOUSING UNIT (7200-LOCK)

SKU:7200-LOCK



### COUPLING PIECE (7201/7202)

SKU:7201/ 7202

#### Variations

Typ

Coupling piece for rack - tube Ø27mm

Coupling piece for rack - tube Ø32mm



### TUBULAR MOTOR NOVA 50 (6965)

SKU:6965

50Nm

No warranty granted in case of chain break if tubular motor is used without 90 degrees angle guide rail art. 3223 and chain protection for rolling system art. 6911.



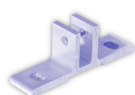


## WINCH (6990/ 6992)

SKU:6990/ 6992

### Variations

Type
Aluminium cast, transmission 7:1
Aluminium cast, transmission 15:1



## BKT FIXING ANGLE (7126)

SKU:7126



## BKT RACK (HOLLOW) (7100)

SKU:7100

1.65m straight



## CABLE SAFETY CHAIN (6912)

SKU:6912

End clip



## ADAPTER (6915)

SKU:6915

for roll up motor



## SUPPORT 50X50MM (6916)

SKU:6916

for tubular motor



## CABLE SAFETY CHAIN (6911)

SKU:6911

Segment approx. 100cm



## GW30 DRIVE (6530/ 6535)

SKU:6530/ 6535

### Variations

Type
400.26K100 0.26 kW
400.52K100 0,37 kW



## GW40 DRIVE (6540/ 6545)

SKU:6540/ 6545

### Variations

Type
400.26K100 0,37 kW
400.52K100 0,37 kW



## GXP DRIVE (6705)

SKU:6705

Motor for roll up system 400V



### CABLE SAFETY CHAIN (6910)

SKU:6910

Start clip



### TUBULAR MOTOR RMA (6261/ 6265)

SKU:6261/ 6265

#### Variations

Type
20.0512 50Nm / 12rpm
20.1212 120Nm / 11rpm



### GW-MOUNTING PLATE (6505/ 6506)

SKU:6505/ 6506

#### Variations

Typ
under truss mounting
MP.GW.R.A163



### MOTOR PLATE FOR SIDE SUPPORT (6172)

SKU:6172



### MOTOR PLATE (6173)

SKU:6173

220x 250x 8mm



### LOCK EWA 16 9003 (6175-6)

SKU:6175-6

900Nm/ 2.4 rpm hexagonal shaft



### GW10 DRIVE (6520/ 6525)

SKU:6520/ 6525

400.26K100 0.09 kW

#### Variations

Typ
400.26K100 0.09 kW
400.52K100 0,18 kW



### LOCK EWA 14 3505 (6145)

SKU:6145

#### Variations

Type
350Nm/ 4,4 rpm round shaft
350Nm/ 4,4 rpm hexagonal shaft 400V



### LOCK EWA 14 6003 (6163-6)

SKU:6163-6

600Nm/ 3.2 rpm hexagonal shaft



### LOCK EWA 14 4505 (6155)

SKU:6155



### LOCK EWA 10 0505 (6101)

SKU:6101

#### Variations

##### Type

50Nm/ 5.6 rpm 400V We06 400V 50Hz E20

50Nm/ 5.6 rpm We06 400V 50Hz E20 A60

50Nm/ 5.9 rpm round shaft 230V



### LOCK EWA 12 2505 (6135)

SKU:6135

#### Variations

##### Type

250Nm/ 4,4rpm round shaft

250Nm/ 4,4 U round shaft



### NUT COUPLING 1" (6088/ 6089)

SKU:6088/ 6089

#### Variations

##### Type

for motor with round shaft

for motor with hexagonal shaft



### CHAIN COUPLING SET (6090/ 6091/ 6093)

SKU:6090/ 6091/ 6093

#### Variations

##### Type

450Nm/ 4,4 rpm round shaft

450Nm/ 4,4 rpm hexagonal shaft 400V



### LOCK EWA 10 0905 (6115)

SKU:6115

#### Variations

##### Type

90Nm/ 5,6 rpm round shaft

90Nm/ 5,6 rpm hexagonal shaft



### LOCK EWA 12 1505 (6130)

SKU:6130

#### Variations

##### Type

150Nm/ 4,4 rpm round shaft

150Nm/ 4,4rpm hexagonal shaft



### NUT COUPLING 1" (6089)

SKU:6089

with 2 screws / hexagonal



### SET OF MOUNTING BRACKET (3457)

SKU:3457

for EWA 10/ 12/ 14 drives

## Variations

---

Type
hexagonal / for tube 1"+ 2"
hexagonal / tube 1,5"
1" to screw / motor with round shaft

# WIRES & CABLES



## CLAMPING BLOCK, DIFFERENT TYPES (5600/ 5601)

SKU:5600/ 5601

### Variations

#### Type

for wire and profile, flat

for wire and Ø19mm tube (with 2 turned-up edges)



## CABLE DRUM 2" SEPARABLE (5207)

SKU:5207



## CABLE PULLEY WITH CLAMP (4990)

SKU:4990

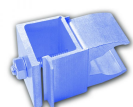
for 1-5mm wire



## BUSHING JOINT, SEPARABLE (4425)

SKU:4425

in plastic, für old systems



## COUPLING PIECE FOR WIRE DRIVEN SYSTEMS (5605)

SKU:5605

complete SET  
(consisting of clamping block, art.  
5600/ 5601  
+ clamp for Ø19mm tube, art. 3010)



## DOUBLE AWING PULLEY (5297)

SKU:5297

Ø100mm PRO for beam 50x30mm



## RETURN PULLEY WITH SUPPORTING BEAM (5295/ 5295-30)

SKU:5295/ 5295-30

### Variations

#### Typ

Ø100mm for beam 50x50mm mounting  
from the back



## SUPPORTING BEAM WITH PULLEY (5291/ 5292)

SKU:5291/ 5292

### Variations

#### Type

Ø100mm

PRO (reinforced pulley) Ø100mm

### Typ

Ø100mm for beam 50x30mm mounting from the back



### PLASTIC ROLL (5211)

SKU:5211

for glide-off tin plate, art. 5289



### GLIDE-OFF TIN PLATE (5289)

SKU:5289

for pulling wires



### TWO HALF-SHELLS, PLASTIC (5209-1)

SKU:5209-1

for cable drum art. 5209



### CABLE DRUM 2" (5209)

SKU:5209

incl. 3 bolts M8x12



### CABLE DRUM WITH HOSE CLAMP (5204)

SKU:5204

1", with bolt and nut



### CABLE DRUM, SPECIAL 1,5" (5200-15)

SKU:5200-15

4m, one-piece, glued, plastic



### CABLE DRUM 1" (5200/ 5200-15/ 5202/ 5203)

SKU:5200/ 5200-15/ 5202/ 5203



### WIRE GUIDE, STAINLESS STEEL (3691/ 3692)

SKU:3691/ 3692

for tube Ø19mm

### Variations

#### Type

4m, single piece, plastic

special 1.5" 4m, single piece, glued

4m, separable, plastic

6m, separable, plastic

### Variations

#### Type

short (13mm)

long (38mm)



### MAXI-WIRE TENSIONER (4998/ 4999)

SKU:4998/ 4999



### WIRE TENSIONER (4991/ 4992)

SKU:4991/ 4992

## Variations

### Tipo

115mm

120mm



### CABLE FIXING CLAMP (4988/ 4989)

SKU:4988/ 4989

## Variations

### Typ

1-5mm, ultimate load 1250kg

1-5mm, ultimate load 500kg



### WIRE TENSIONER WITH FLAT FRONT EDGE (4981/ 4984)

SKU:4981/ 4984

## Variations

### Type

1.8-3.0mm / max 400 kg

3.0-4.2mm / max 600kg



### BRACKET 50X50M, STAINLESS STEEL (4820)

SKU:4820

for polyester wire, 5mm



### STRETCHING WIRE HOLDER, OPEN (4814)

SKU:4814

Multi 50x50 / 50x30mm

## Variations

### Type

85mm

100mm



### WIRE TENSIONER WITH TWIN MOUNTING (4982)

SKU:4982

for Ø2.00 to 3.25mm wire  
max 400kg

### TENSIONING DEVICE (4980)

SKU:4980

for wire tensioner Art. 4981-4985  
(0-400KG)

### TUBE CLAMP FOR TUBE 50X50MM (4815/ 4818)

SKU:4815/ 4818

## Variations

### Type

with compact wire tensioner

metal



### COMPACT WIRE TENSIONER (4810)

SKU:4810



## WIRE SCISSORS (8330)

SKU:8330

### Variations



## ATLAS WIRE, TRANSPARENT (4030/ 4033)

SKU:4030/ 4033

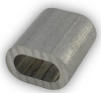
Ring ca. 11Kg/ ca. 2.970m (=ca. 270m/  
kg)

### Variations

#### Typ

2mm, Ring of ca. 11Kg/ ca. 2.970m (ca.  
270m/kg)

3mm, Ring of ca. 11Kg/ ca. 1320m (=ca.  
120m/ kg)



## PRESS SLIDE, OVAL (4503/ 4513)

SKU:4503/ 4513

Aluminium

### Variations

#### Type

oval

round



## CABLE CLAMP, OVAL (4412/ 4413/ 4414)

SKU:4412/ 4413/ 4414

### Variations

#### Type

Size 2

Size 3

Size 4



## SPECIAL WIRE, PP-COATED (4070)

SKU:4070

2 to 3mm, 1000m roll



## CABLE CLAMP (4401/ 4402)

SKU:4401/ 4402

galvanized / cast iron

### Variations

#### Type

Any Typ

Any Typ





## WIRE, STAINLESS STEEL (4080/ 4081)

SKU:4080/ 4081

### Variations

#### Typ

3mm, 7x7

3mm, 6x19+1 (special)



## WIRE, STAINLESS STEEL (4056/ 4080/ 4081)

SKU:4056/ 4080/ 4081

Roll ca.1000m

### Variations

#### Type

6x7, 3mm

7x7, 3mm

6x19+1 special, 3mm



## VICTOR CHAIN (4006)

SKU:4006

ca. 2.5mm (1 pack. = 30m)



## POLYESTER WIRE (4040/4041)

SKU:4040/4041

Roll of 1800m

### Variations

#### Type

Any Typ

Any Typ



## WIRE, STAINLESS STEEL (4020/ 4023/ 4024)

SKU:4020/ 4023/ 4024

without unwinding station

### Variations

#### Type

2mm, Type 1.4301, Ring of ca. 35 kg=1400m

3mm, Type 1.4301 special thickness, ring of ca. 1kg= 17m

4mm, Type 1.4301 special thickness, ca. 1kg= 10m



## POLYESTER ROPE (4012/ 4013)

SKU:4012/ 4013

Roll of 500m (white/ blue)

### Variations

#### Type

Any Typ

Any Typ



**POLYESTER ROPE, 4MM  
(4014)**

SKU:4014

Roll of 500m

---



**SOLID STAINLESS STEEL  
WIRE (4020)**

SKU:4020

2mm, type 1.4301 (without unwinding station)

Ring of approx. 35kg = 1400m  
alternatively on large coils of approx.  
250kg

---

# ROLLING SCREEN SYSTEMS



## FIXED-BACK CHANNEL RAIL (3630)

SKU:3630

for Ø6mm cord, AL 6.40m



## END PIECE FOR ROLL UP TUBE, BALL BEARING MOUNTED (3291)

SKU:3291

Aluminium



## PROFILE SHAFT Ø175MM (3275)

SKU:3275

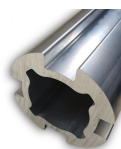
Standard length: 640cm  
other lengths upon request



## CONNECTOR FOR ROUND SHAFT ON DOUBLE DUO ULTRA (3272)

SKU:3272

for LOCK round shaft



## CONNECTOR FOR Ø100MM ROLL UP TUBES (3265-20)

SKU:3265-20

20cm long & adapter for Ø50mm tube



## TUBE FOR ROLLING SYSTEM "DOUBLE DUO" (3269/ 3670)

SKU:3269/ 3670

### Variations

#### Typ

Ø100mm, 640cm

Ø100mm Ultra, 640cm



## TUBE CONNECTOR (3257/ 3266)

SKU:3257/ 3266

### Variations

#### Typ

double groove for Ø50mm tube

double groove for Ø63mm tube



## ROLL UP TUBE, DOUBLE GROOVE (3252/ 3261)

SKU:3252/ 3261

### Variations

#### Type

Ø50mm, 640cm

Ø63mm, 640cm



## ROLLING SCREEN GUIDE (3228/ 3231)

SKU:3228/ 3231

### Variations

#### Typ

for Ø27mm tube, with stainless bracket

for Ø27mm tube, for twin-screens



## CABLE CHAIN BRACKET (3223)

SKU:3223

90 degrees, for rolling system



## ROLL SCREEN SLIDER, STAINLESS STEEL (3221)

SKU:3221

for rail Art. 3220

### Variations

#### Typ

short, with 10mm flange for Nova50 tube motor

long, with 10mm flange for Nova50 tube motor



## GUIDE BAR, DIFFERENT LENGTHS (3220)

SKU:3220

for Art. 3221

### Variations

#### Typ

250cm

400cm

500cm

600cm



## PURLIN CLIP FOR ROLL SCREEN (3216)

SKU:3216

# TECHNICAL PARTS



## RIGID CONNECTOR, STEEL, FOR Ø19MM TUBE (N/A)

SKU:N/A



## CLAMPING BLOCK, DIFFERENT TYPES (5600/ 5601)

SKU:5600/ 5601

### Variations

Type
for wire and profile, flat
for wire and Ø19mm tube (with 2 turned-up edges)



## CABLE DRUM 2'' SEPARABLE (5207)

SKU:5207



## S-HOOK GALVANISED (5003)

SKU:5003



## BUSHING JOINT, SEPARABLE (4425)

SKU:4425

in plastic, für old systems



## HS<sup>2</sup> SUPPORT BRACKET FOR TRUSS (3686)

SKU:3686

in plastic, single piece, without self-drilling screw (art. 8630)



## SUSPENSION CLAMP (5718/ 5719)

SKU:5718/ 5719

### Variations

Type
with 3 holes
special 8-14mm



## COUPLING PIECE FOR WIRE DRIVEN SYSTEMS (5605)

SKU:5605

complete SET  
(consisting of clamping block, art.  
5600/ 5601  
+ clamp for Ø19mm tube, art. 3010)

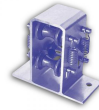


### SLIDING CLUTCH (5550/ 5555)

SKU:5550/ 5555

#### Variations

Typ



### DELAY ELEMENTS (5520/ 5530/ 5532/ 5540)

SKU:5520/ 5530/ 5532/ 5540

#### Variations

Type

for push-pull-systems

for profile and wire system

with Ø19mm tube clamp

Ultra Delay (Ø19mm & profile)



### HOSE CLAMP, METAL (5518/ 5519)

SKU:5518/ 5519

#### Variations

Typ

for Ø19mm tube

for Ø32mm tube



### SLIDING CLAMP, LARGE (5517)

SKU:5517

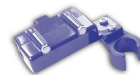
black, plastic



### CROSS-TYPE CLAMP, SMALL (5516)

SKU:5516

plastic, black



### DELAY ELEMENT, PLASTIC (5510/ 5511)

SKU:5510/ 5511

#### Variations

Typ

D for hanging system

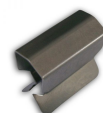
NL for laying system



### SET OF WEIGHTS FOR CLOTH (5495)

SKU:5495

SET consisting of 2 weights and 1 pin



### CLAMP, STAINLESS STEEL (5415)

SKU:5415



## CLOTH PEG (5400/ 5405)

SKU:5400/ 5405

### Variations

#### Type

plastic

stainless steel



## SUPPORT ELEMENT (5355)

SKU:5355

for Ø19mm tube



## SUSPENSION HOLDER, PLASTIC (5335)

SKU:5335

for Ø19mm tube, black  
also available in WHITE, art. 5335-2



## TUBE CLAMP, PLASTIC, DIFFERENT TYPES (5320/ 5331/ 5332/ 5333/ 5334)

SKU:5320/ 5331/ 5332/ 5333/ 5334

### Variations

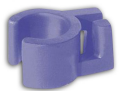
#### Type

with arm

with 2 fixing screws

with 1 fixing screw

small, with 1 fixing screw



## SCREEN CLIP WITH WIRE SUPPORT (5300)

SKU:5300



## DOUBLE AWING PULLEY (5297)

SKU:5297

Ø100mm PRO for beam 50x30mm



## RETURN PULLEY WITH SUPPORTING BEAM (5295/ 5295-30)

SKU:5295/ 5295-30

### Variations

#### Typ

Ø100mm for beam 50x50mm mounting  
from the back

Ø100mm for beam 50x30mm mounting  
from the back



## SUPPORTING BEAM WITH PULLEY (5291/ 5292)

SKU:5291/ 5292

### Variations

#### Type

Ø100mm

PRO (reinforced pulley) Ø100mm

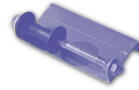


### PLASTIC ROLL (5211)

SKU:5211

for glide-off tin plate, art. 5289

---



### GLIDE-OFF TIN PLATE (5289)

SKU:5289

for pulling wires

---



### BALL BEARING FOR BEARING PLATE (5281-1)

SKU:5281-1

for 1"/2" shaft, short

---



### BEARING PLATE, SQUARE (5281/ 5282/ 5283/ 5285)

SKU:5281/ 5282/ 5283/ 5285

---

#### Variations

##### Typ

for 1" shaft short

for 1" shaft long

for 2" shaft short

with flange



### BALL BEARING WITH FIXING SCREW (5279)

SKU:5279

---



### BALL BEARING WITHOUT FIXING SCREW (5278)

SKU:5278

---



### BEARING HOUSING (5276)

SKU:5276

(single)

---



### BEARING HOUSING SET (5276+5278/ 5276+5279)

SKU:5276+5278/ 5276+5279

---

#### Variations

##### Type

with ball bearing without fixing screw

with ball bearing and fixing screw



### BEARING 1", PLASTIC (5270)

SKU:5270

1" for square tube (50x50mm)

---



### BEARING PLATE, ROUND (5272/ 5273/ 5274/ 5274-42)

SKU:5272/ 5273/ 5274/ 5274-42

---





### CARDAN SHAFT (5260-0/ 5261/ 5265/ 5266)

SKU:5260-0/ 5261/ 5265/ 5266

#### Variations

##### Type

1" with adaptor end 26,7mm (twisted version)

1" with adaptor end 26,7mm (new)

1,5" with adaptor end 41mm and Ø10mm hole



### SWIVEL PULLEY (5243/ 5244/ 5245/ 5246/ 5247)

SKU:5243/ 5244/ 5245/ 5246/ 5247

#### Variations

##### Typ

without ball bearing, 2 holes

without ball bearing, 1 hole

double with ball bearing, 2 holes

double without ball bearing, 2 holes

simple, with ball bearing, 2 holes



### AWING PULLEY (5241/ 5242)

SKU:5241/ 5242

#### Variations



### SEALING BRACKET, PLASTIC (5253)

SKU:5253

2mm, reinforced



### AWING PULLEY PRO FOR ULTRAFIX-PLATE (5233)

SKU:5233

Ø100mm



### AWING PULLEY WITH SPECIAL PLASTIC BRACKET (5240)

SKU:5240

50 x 50mm

#### Variations

##### Type

for 1" shaft, cast-iron housing

for 1,5" shaft, cast-iron housing

for 2" shaft, cast-iron housing

for 42m shaft, cast-iron housing

Type
simple
open



### BRACKET FOR AWING PULLEY (5232-1/ 5235-1)

SKU:5232-1/ 5235-1

#### Variations

Typ
galvanised steel, for PRO awing pulley
galvanised steel, for Ø100mm awing pulley



### AWING PULLEY WITH BRACKET, DIFFERENT TYPES (5224/ 5225/ 5225-AS/ 5232/ 5235)

SKU:5224/ 5225/ 5225-AS/ 5232/ 5235

#### Variations

Type
Ø100mm for Ultrafix-Plate
Ø80mm PRO
Ø80mm
Ø100mm PRO
Ø100mm



### AWING PULLEY WITHOUT BRACKET (5220/ 5221/ 5230-2/ 5231)

SKU:5220/ 5221/ 5230-2/ 5231

#### Variations

Type
Ø80mm
Ø80mm PRO (reinforced)
Ø100mm reinforced, thin
Ø100mm PRO



### AWING PULLEY Ø52MM (5215)

SKU:5215

Plastic, Ø8mm drilling



### DIABOLO WHEEL, PLASTIC (5210/ 5212/ 5213)

SKU:5210/ 5212/ 5213

#### Variations

Typ
large M8
small M6 for Ø27mm tube



### TWO HALF-SHELLS, PLASTIC (5209-1)

SKU:5209-1

for cable drum art. 5209

### Typ

small for Ø32mm tube



### CABLE DRUM 2" (5209)

SKU:5209

incl. 3 bolts M8x12



### CABLE DRUM WITH HOSE CLAMP (5204)

SKU:5204

1", with bolt and nut



### CABLE DRUM, SPECIAL 1,5" (5200-15)

SKU:5200-15

4m, one-piece, glued, plastic



### CABLE DRUM 1" (5200/5200-15/ 5202/ 5203)

SKU:5200/ 5200-15/ 5202/ 5203

### Variations

#### Type

4m, single piece, plastic

special 1.5" 4m, single piece, glued

4m, separable, plastic

6m, separable, plastic



### TRIPLE HOOK (SET OF THREE PIECES) (5151)

SKU:5151

Hook / big element / small element



### MD CLIP (5140)

SKU:5140

Plastic



### SCREEN FOLDER, DIFFERENT TYPES (5010/ 5131/ 5135/ 5136)

SKU:5010/ 5131/ 5135/ 5136



### SCREEN HOOK, EGG SHAPE (5120)

SKU:5120

in plastic

### Variations

#### Type

simple, stainless steel

irregular legs, stainless steel

double legs, plastic



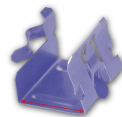
### CLIP FOR TUBE (5117/ 5119)

SKU:5117/ 5119

for Ø19mm tube

#### Variations

Typ
stainless steel
plastic



### TRUSS CLIP, STAINLESS STEEL (5020- 5060)

SKU:5020- 5060

#### Variations

Typ
20mm
25mm
30mm
35mm
40mm
45mm
50mm
60mm



### SCREEN GUIDE, STAINLESS STEEL (5010)

SKU:5010



### OUTDOOR HOOK (5006)

SKU:5006

Plastic, black



### S-HOOK (SCREEN HOOK), PLASTIC (5000/ 5001-1/ 5001-2)

SKU:5000/ 5001-1/ 5001-2

#### Variations

Typ
standard
'PRO' (with anti-slip feature) black
'PRO' (with anti-slip feature) white



### SNAP HOOK (4420/ 4421)

SKU:4420/ 4421

#### Variations

Type
light (screw closure 4mm)
heavy (stainless steel)



### TUBE HOLDER, ALUMINIUM (3827/ 3832)

SKU:3827/ 3832

#### Variations



### ALUMINIUM CLAMP (3727/ 3732)

SKU:3727/ 3732

#### Variations

Typ
Ø27mm
Ø32mm



### WIRE GUIDE FOR PROFILE, PLASTIC (3697)

SKU:3697

only indoor use

Type
for Ø27mm tube
for Ø32mm tube



### WIRE GUIDE FOR PROFILE, STAINLESS STEEL (3695)

SKU:3695

for Uni-profile



### WIRE GUIDE, PLASTIC (3694)

SKU:3694

for profile (top)



### WIRE GUIDE, STAINLESS STEEL (3691/ 3692)

SKU:3691/ 3692

for tube Ø19mm

### Variations

Type
short (13mm)
long (38mm)



### TABLE CLAMP (3591/ 3626/ 3628)

SKU:3591/ 3626/ 3628

### Variations

Type
HD for Ø32mm tube with nuts and bolts
for Ø27mm tube/ 60mm high
for Ø32mm tube/ 60mm high



### HANGING PLATE (WITH HOLES) (3520)

SKU:3520

148 x 40 x 3mm



### DIABOLO WHEEL WITH BRACKET (3485)

SKU:3485



### NUT M6, STAINLESS STEEL (3026)

SKU:3026



## HAMMERHEAD BOLT M6, STAINLESS STEEL (3025)

SKU:3025

### Variations

#### Typ

M6 x 16mm without nut

M6 x 27mm without nut

M6 x 30mm without nut



## HAMMERHEAD BOLT, GALVANISED (3015-25/ 3015-30)

SKU:3015-25/ 3015-30

### Variations

#### Typ

M6 x 25mm with nut

M6 x 30mm with nut

M6 x 30mm without nut



## CLAMP (3010)

SKU:3010

for Ø19mm tube



## WIRE TENSIONER (4991/ 4992)

SKU:4991/ 4992

### Variations

#### Type

85mm



## NUT M6 (3016)

SKU:3016

for hammerhead bolt art. 3014/ 3015



## HAMMERHEAD BOLT, GALVANISED (3014/ 3015)

SKU:3014/ 3015

### Variations

#### Type

M6 x 40mm

M6 x 75mm



## MAXI-WIRE TENSIONER (4998/ 4999)

SKU:4998/ 4999

### Variations

#### Tipo

115mm

120mm



## CABLE FIXING CLAMP (4988/ 4989)

SKU:4988/ 4989

### Variations

#### Typ

1-5mm, ultimate load 1250kg

Type
------

100mm
-------



### WIRE TENSIONER WITH TWIN MOUNTING (4982)

SKU:4982

for Ø2.00 to 3.25mm wire  
max 400kg

Typ
-----

1-5mm, ultimate load 500kg
----------------------------



### BRACKET 50X50M, STAINLESS STEEL (4820)

SKU:4820

for polyester wire, 5mm



### TUBE CLAMP FOR TUBE 50X50MM (4815/ 4818)

SKU:4815/ 4818



### COMPACT WIRE TENSIONER (4810)

SKU:4810

## Variations

Type
------

with compact wire tensioner
-----------------------------

metal
-------



### VICTOR CHAIN (4006)

SKU:4006

ca. 2.5mm (1 pack. = 30m)

# TUBES AND PROFILES



## PVC TUBE (3500)

SKU:3500

several lengths available (3.05m / 3.20m / 4.00m / 4.5m / 5.00m)  
Ø10mm - white



## RIGID CONNECTOR, STEEL, FOR Ø19MM TUBE (N/A)

SKU:N/A



## APS DUO HD PROFILE (3625)

SKU:3625

in aluminium  
6.4m long



## HS<sup>2</sup> TRUSS COVERING PROFILE (3717)

SKU:3717

in Aluminium  
Length: 6.40m  
Width: 80mm



## BLACK SEALING RUBBER FOR SCREEN PROFILE (3698/ 3699)

SKU:3698/ 3699



## COUPLING PIECE FOR SCREEN PROFILE (3689/ 3690)

SKU:3689/ 3690

### Variations

Type
------

200m per box / large, 100m per box

schwarz, BREIT, Pck a 100m

### Variations

Type
------

in AL, straight

in AL, bent



## SCREW FOR SUPPORT BRACKET (ART. 3685) (3685-1)

SKU:3685-1

M6x12, stainless steel



## SUSPENSION BRACKET FOR APS2 AND APS DUO PROFILES (3685)

SKU:3685

in plastic, without screw (art.3685-1)



## SIGMA-PROFILE (3650)

SKU:3650

AL-construction profile/ 6,4m



## APS DUO NEO PROFILE (3641)

SKU:3641



40x40mm

Aluminium/ 6.40m



### KEDERPLUS PROFILE (3639)

SKU:3639

Aluminium/ 6.40m



### APS2 SCREEN PROFILE (3636)

SKU:3636

Aluminium/ 6.4m



### FIXED-BACK CHANNEL RAIL (3630)

SKU:3630

for Ø6mm cord, AL 6.40m



### APS CONNECT AL-PROFILE (3623)

SKU:3623

Length: 6.40m



### SCREEN PROFILE APS QUATTRO (3620/ 3620-2)

SKU:3620/ 3620-2

Length: 6.4m



### JANUS PROFILE (3619)

SKU:3619

In aluminium/ 6.4m long.  
Only suitable for light-weight screens  
and short distances between wires  
and/or racks.

## Variations

#### Type

in aluminium

in plastic



### APS DUO SUPPORT PROFILE (3624)

SKU:3624

in aluminium  
6.4m long

### HS<sup>2</sup> ISOLATING RUBBER (3570)

SKU:3570

für profile joints (art. 3624-3625)



### MAXI CLAMP SET WITH LONG HOLES (3470)

SKU:3470

for 50/50mm tube  
consisting of:  
- clamp plates in galv. steel (2 pieces)  
- M10 screws (4 pieces)



### CLAMPING PLATE WITH LONG HOLES (3469)

SKU:3469

for art. 3470 (Maxi clamp set)  
200x50x10mm



### OMEGA SET (3452)

SKU:3452

consisting of:

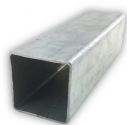
- Omega coupling piece 50/50
- Support plate (103x160mm)
- Screw M8x160mm (4 units)



### SQUARE TUBE 50X 50X 2MM (3450)

SKU:3450

6.4m, galvanised



### CONNECTOR FOR SQUARE TUBE (ART. 3450) (3451)

SKU:3451

45x 45x 200mm



### RUBBER STOPPER FOR Ø19MM TUBE (3294)

SKU:3294

45mm long



### PIPE WRAP CONNECTOR FOR 1" TUBE (3445)

SKU:3445

incl. 4x M8x50mm



### ELBOW JOINT FOR SQUARE TUBE (3449)

SKU:3449

50 x 50mm



### TUBE JOINT (3191)

SKU:3191

rigid, for Ø19mm aluminium tube, in plastic



### JOINT CONNECTOR, DIFFERENT TYPES (3190/ 3192/ 3195)

SKU:3190/ 3192/ 3195



### ALUMINIUM TUBE (3119)

SKU:3119

Ø19mm x 1.0mm x 6.4m



### DRIVE SHAFT (GALVANISED TUBE 2") (3047/ 3048)

SKU:3047/ 3048

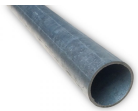
## Variations

#### Type

riveted, for Ø19mm AL tube

SET of two pieces (P+P)

SET of two pieces (M+P)



### DRIVE SHAFT TUBE (GALVANISED) (3045/ 3046)

SKU:3045/ 3046

#### Variations

##### Type

1" x 2,5mm x 6470mm, tapered,  
screwable

5/4" x 2,5mm x 6470mm



### CONNECTING BOLT AND NUT (3001/ 3002)

SKU:3001/ 3002

SET of two for tube Ø27/32mm



### DIABOLO WHEEL, PLASTIC (5210/ 5212/ 5213)

SKU:5210/ 5212/ 5213

#### Variations

##### Typ

large M8

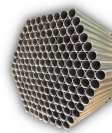
small M6 for Ø27mm tube

small for Ø32mm tube



### ALUMINIUM CLAMP (3727/ 3732)

SKU:3727/ 3732



### ROUND TUBE, GALVANIZED (3019/ 3027/ 3032)

SKU:3019/ 3027/ 3032

#### Variations

##### Type

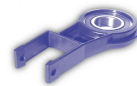
60.3mm x 3.65mm x 6.0m, tapered

60.3mm x 3.65mm x 6.0m, not tapered

Ø19mm x 0.8mm x 6.47m + 7cm  
tapered

Ø27mm x 1.5mm x 6.40m + 7cm  
tapered

Ø32mm x 1.5mm x 6.40m + 7cm  
tapered



### BEARING 1", PLASTIC (5270)

SKU:5270

1" for square tube (50x50mm)



### TUBE HOLDER, ALUMINIUM (3827/ 3832)

SKU:3827/ 3832

#### Variations

##### Typ

Ø27mm

Ø32mm



### WIRE GUIDE FOR PROFILE, PLASTIC (3697)

SKU:3697

only indoor use

## Variations

### Type

for Ø27mm tube

for Ø32mm tube



### WIRE GUIDE FOR PROFILE, STAINLESS STEEL (3695)

SKU:3695

for Uni-profile



### WIRE GUIDE, PLASTIC (3694)

SKU:3694

for profile (top)



### WIRE GUIDE, STAINLESS STEEL (3691/ 3692)

SKU:3691/ 3692

for tube Ø19mm



### TABLE CLAMP (3591/ 3626/ 3628)

SKU:3591/ 3626/ 3628

## Variations

### Type

short (13mm)

long (38mm)



### HAMMERHEAD BOLT, GALVANISED (3014/ 3015)

SKU:3014/ 3015

## Variations

### Type

M6 x 40mm

M6 x 75mm

## Variations

### Type

HD for Ø32mm tube with nuts and bolts

for Ø27mm tube/ 60mm high

for Ø32mm tube/ 60mm high



### CLAMP (3010)

SKU:3010

for Ø19mm tube

## OTHER ACCESSORIES



### AIR HEATER (WITH WARM WATER) (8822)

SKU:8822



### CARTRIDGE GUN (2295)

SKU:2295



### SILICONE GLUE (2290)

SKU:2290



### FIXING ELEMENTS, ROUND (2299)

SKU:2299

(see also art. 2290 silicone glue)  
Note for fastening: min. 4 elements pro m<sup>2</sup> surface



### HEXAGONAL DRILLING SCREW (8625/ 8630)

SKU:8625/ 8630



### LED POWER SUPPLY UNIT (8569)

SKU:8569

12V 192W IP67

### Variations

#### Type

with flange 4,2x 25mm for HS<sup>2</sup>-support bracket (Art. 3686)

with flange 6,3x 19mm



### LED STRIP, COLD WHITE (8560)

SKU:8560

encapsulated, IP68 12V 5m (1pc/ roll)



### STAPLES, STAINLESS STEEL (8415)

SKU:8415

24/6, 1000 pack



### STAPLER, HEAVY-DUTY (8410)

SKU:8410

without staples (art. 8414)



### BLADE FOR HEAT-CUTTER (8312 / 8313)

SKU:8312 / 8313

### Variations



### HEAT-CUTTER (8310)

SKU:8310

230V (without tip Art. 8312 / 8313)

---



### BUSHING JOINT, SEPARABLE (4425)

SKU:4425

in plastic, für old systems

---



### TENSIONING DEVICE (4980)

SKU:4980

for wire tensioner Art. 4981-4985  
(0-400KG)

---



### STRIP BRUSH (8100/ 8199)

SKU:8100/ 8199

---

#### Variations

##### Type

with horse hair and 25mm h-Aluminium profile, 3.0m long

with 100mm artificial bristles without profile, 2.0m long



### SNAP HOOK (4420/ 4421)

SKU:4420/ 4421

---

#### Variations

##### Type

light (screw closure 4mm)

heavy (stainless steel)



### WIRE SCISSORS (8330)

SKU:8330

---

#### Variations

# HORTICULTURE SUPPLIES

## LED LIGHTING



### **LED-PROFILE + DIFFUSOR (3644+ 3350)**

SKU:3644+ 3350

Aluminium/ 6.4m

---

# DEKO & EVENTS



## HS TREVIRA CS ANTIFIRE SERIES (1110/ 1124/ 1125)

SKU:1110/ 1124/ 1125

Woven screen made of 100% PES  
Fire retardant  
Standard width: 3.50m for white / 2,15m for colour  
Weight: ca. 150g/m<sup>2</sup>  
Shading level: white ca. 52% / in colour ca. 65%  
Energy saving: ca. 50-55%

### Variations

Type
white
FLEXA, terracotta-white, thin stripes
FLEXA, terracotta-white, wide stripes



## HS DEKOTEX - STAGE MOLTON (1910/ 1913/ 1915/ 1916/ 1914/ 1915)

SKU:1910/ 1913/ 1915/ 1916/ 1914/ 1915

Weight: 300gr/m<sup>2</sup>  
Fire retardant in conformity with DIN4102B1  
Non-washable

### Variations

Type
blue
grey
green
night blue
red
black



## HS MODACRYLICS SERIES (1150 / 1151)

SKU:1150 / 1151

Woven screen of modified acrylics (modacrylics)  
Fire retardant  
Standard width: 3.50m / 4.30m  
Weight: ca. 148g/m<sup>2</sup>  
Shading level: white ca. 55% / in colour ca. 65%  
Energy saving: ca. 50-55%

### Variations

Type
white
grey-white 2:2



## HS TREVIRA ANTIFIRE (1110/ 1124/ 1125)

SKU:1110/ 1124/ 1125

Woven screen 100% Polyester  
Standard width: white 3.50m / in colour 2.15m  
Weight: ca. 150g/m<sup>2</sup>  
Shading: white ca. 52% / in colour ca. 65%  
Energy saving: ca. 50-55%

### Variations

Type
white, standard width: 3,55m
FLEXA thin stripes (terracotta-white) / standard width: 2,15m
FLEXA large stripes (terracotta-white) / standard width: 2.15m



